



L1 CAPITAL

DAILY CLASS

Long Short Fund

Quarterly Report | September 2020

Unit Price: 1.0208^{1,2}

- **The L1 Capital Long Short Fund returned 8.4% in the September quarter (ASX200AI -0.4%).**
- **The fund performed strongly, primarily due to strong stock selection across the portfolio during August reporting season.**
- **Since inception, the Fund has returned 16.3% p.a. (ASX200AI 4.9% p.a.).**

Monthly Performance (Net %)

Period	Jan	Feb	Mar	Apr	May	Jun	Jul	Aug	Sep	Oct	Nov	Dec	Year
2014	-	-	-	-	-	-	-	-	-2.42	3.03	2.85	1.61	5.07
2015	0.59	9.14	2.42	1.71	3.73	-0.86	3.30	2.06	5.51	8.49	8.11	4.61	60.52
2016	5.81	0.59	5.47	2.46	2.78	-0.89	3.22	3.92	0.46	(0.18)*	0.55	2.13	29.43
2017	2.48	1.79	2.83	1.01	4.14	1.68	2.61	1.67	1.91	2.50	0.86	3.50	30.50
2018	0.54	-0.49	-1.68	1.59	-3.77	-6.31	0.79	-5.93	-2.13	-4.01	-2.62	-6.07	-26.60
2019	4.33	5.14	0.19	2.82	-2.80	3.84	1.16	0.41	2.59	3.34	0.30	2.19	25.87
2020	-7.83	-7.11	-23.04	22.93	10.95	-2.21	-1.96	9.97	0.50				-4.78

* Based on net returns achieved by the L1 Capital Long Short Fund – Monthly Class from inception (1 Sep 14) to 3 Oct 16 when the first Daily class units were issued. This is representative of the investment strategy employed by the L1 Capital Long Short Daily class of the Fund. Past performance should not be taken as an indicator of future performance.

Performance Summary

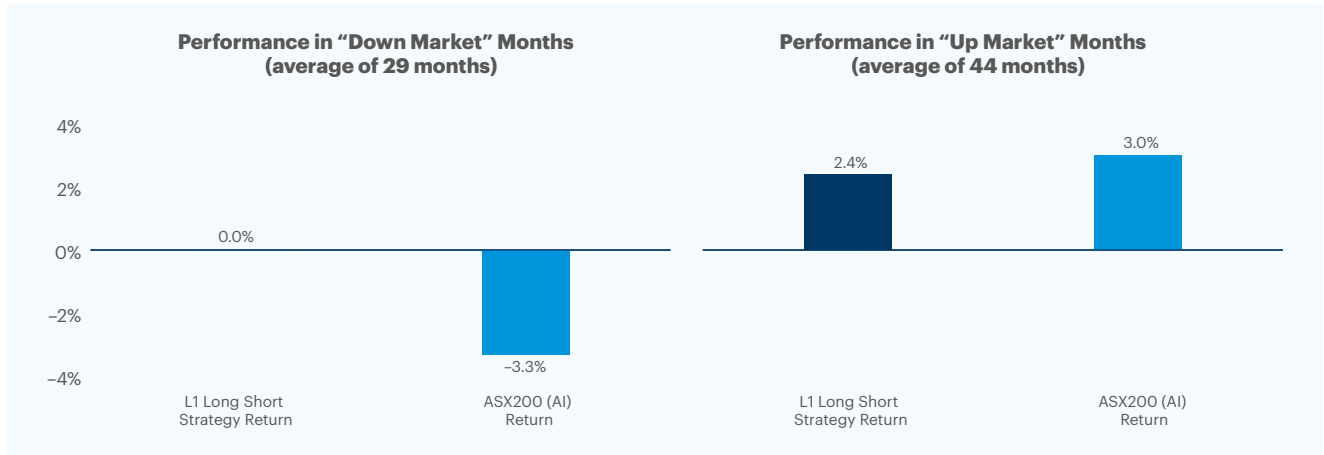
Performance Metrics (%)	Long Short Fund
Three months	8.36
One year	0.86
Three years (p.a.)	-2.00
Five years (p.a.)	12.77
Since inception (p.a.)	16.29
Since inception (cumulative)	150.60

Fund Performance (since inception)

Returns Since Inception (%)	Cumulative	Annualised Return (p.a.)
L1 Capital Long Short Fund (net)	150.6	16.3
S&P ASX200 Accumulation Index	33.7	4.9
MSCI World Index Total Return	35.4	5.1
HFRX Global Hedge Fund Index	5.1	0.8

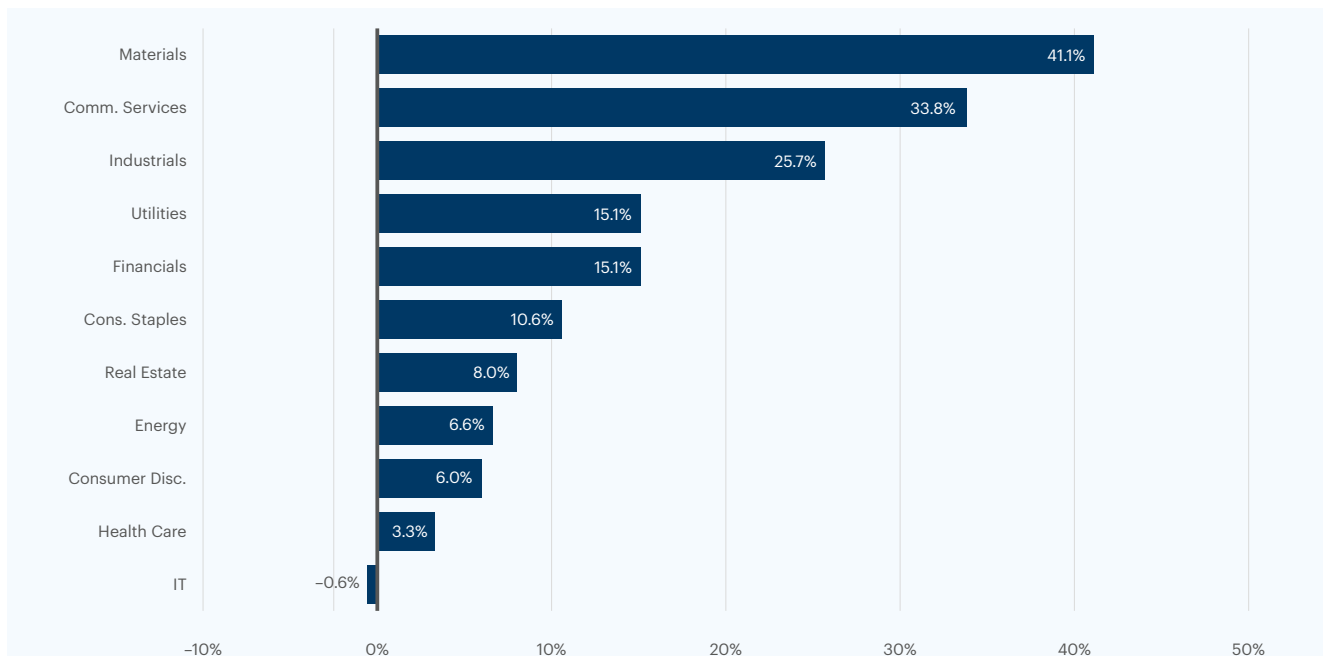


Significant outperformance in falling markets



The L1 Long Short Strategy returns are those of the L1 Capital Long Short Fund – Monthly Class since inception (1 Sep 14). All figures are net returns as at 30 Sep 20. Past performance should not be taken as an indicator of future performance.

Diverse sector performance



All figures are net returns as at 30 Sep 20. Based on net returns achieved by the L1 Capital Long Short Fund – Monthly Class (inception 1 Sep 14). Data presented above refers to underlying security positions in the portfolio. Returns generated from Cash or indices or other similar positions have been excluded from stock attribution

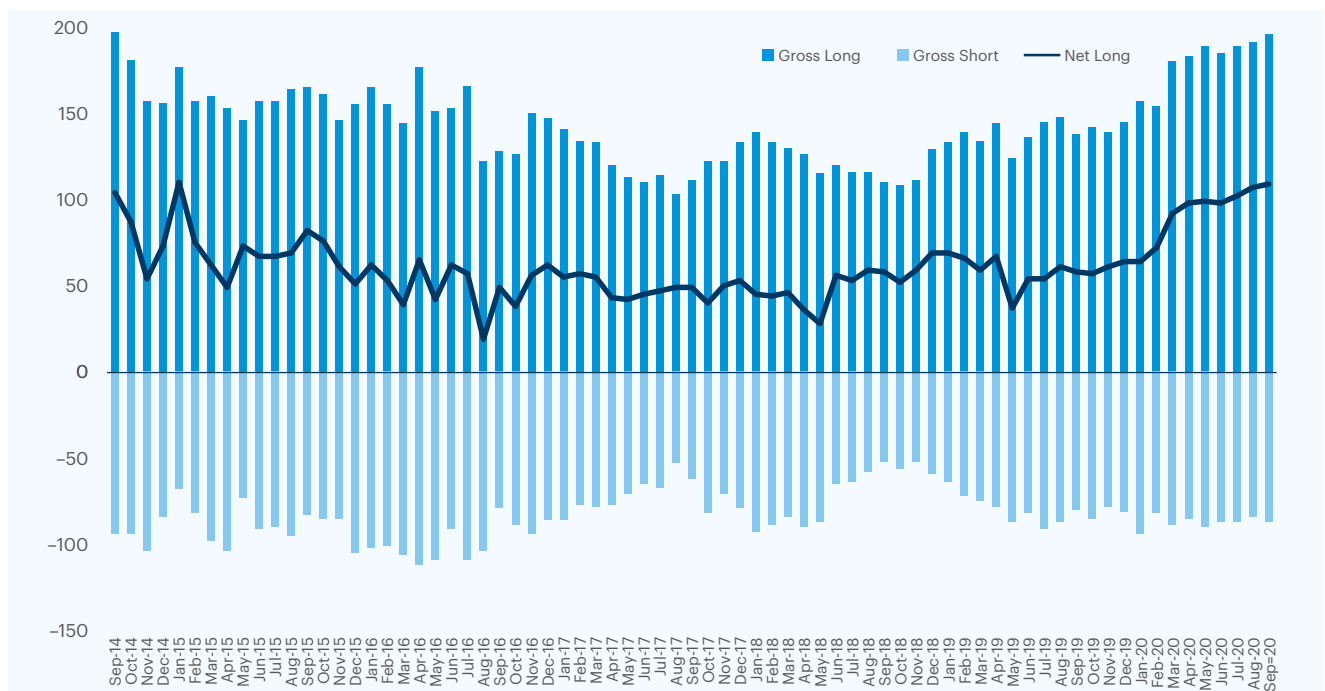


Fund Analytics and Exposures

Fund Characteristics	Current	Avg Since Inception
Number of positions	92	79
Number of long positions	70	52
Number of short positions	22	27
Gross long exposure (%)	196%	145%
Gross short exposure (%)	87%	83%
Gross exposure (%)	282%	228%
Net exposure (%)	109%	62%

Risk Metrics (%)	Long Short Fund
Sharpe ratio	0.8
Sortino ratio	1.4
Percentage of positive months	74.0%
Annualised standard deviation	18.3%
Annualised downside deviation	11.7%

Historical portfolio exposures



All figures are net returns as at 30 Sep 20. Based on portfolio exposures of the L1 Capital Long Short Fund – Monthly Class (inception 1 Sep 14).



The Fund delivered a net return of 8.4% for the quarter (ASX200AI -0.4%).

The Fund had a strong quarter, with stock performance during reporting season proving to be a major driver of returns.

The Fund benefited from:

- **Buying the market aggressively at the March lows** – these opportunities typically only come around once or twice in a decade, so we are pleased to have maintained our composure and acted decisively to take advantage of the panic.
- **Stock selection** – numerous examples of identifying the ‘winner’ across a number of sectors, e.g. Chorus in telcos, Transurban in infrastructure (since exited), West African Resources in gold, Mineral Resources in mining, Hotel Property Investments in property.
- **Avoiding significant damage from our short book during this rally** – closed numerous shorts during the March sell-off, reducing the number of short positions from 34 in February to 24 by mid-April.

Equity Market Observations

Despite a strong recovery in global equity markets since the March lows, sentiment from institutional investors continues to be cautious. The typical concerns cited are the second wave of COVID-19 cases in Europe and America, the upcoming U.S. election, the uncertainty regarding further U.S. fiscal stimulus, the risk of an economic cliff in Australia as JobKeeper and bank loan deferrals come off in Q2 2021 and a lingering concern that “the world will never go back to how it was before COVID-19”.

The ASX200 is now trading around 6000 (versus 7100 back in February), but within that there are numerous stocks that are still significantly below their February highs, largely due to the impact of COVID-19. We continue to believe equities look far more attractive than other asset classes. Cash and most investment grade bonds globally now yield less than inflation, suggesting continued scope for a rotation to equities that should gather pace as the economic outlook becomes clearer.

Furthermore, central bank actions are designed to increase asset prices which will further support equity markets going forward. This is not an unintended consequence, but rather an intended strategy of the extreme monetary stimulus we have seen (aimed at improving consumer and business confidence and generating a wealth effect to spur economic growth). We expect massive liquidity injections from the Fed and other central banks to cause asset inflation, rather than goods and services inflation (at least in the short to medium term).

From a geographic positioning perspective, we believe the U.S. market looks more expensive than other regions (the NASDAQ is trading 20% above its February levels, while the S&P500 is now ahead of its February levels). The U.S. market is now entering a period of elevated risk due to uncertainty regarding the U.S. election, a potential increase in corporate tax rates, government/regulatory risk for ‘big tech’ companies and an enormous fiscal deficit putting more pressure on the U.S. dollar.

From a sector positioning and style perspective, we have continued to see growth and momentum stocks outperform value stocks. Since the start of the global pandemic, investors have sought refuge in stocks that have the following three attributes:

- No significant impact from COVID-19 shutdowns;
- Little impact from collapsing economic activity; and
- An under-gearred balance sheet, with no risk of equity raise.

The result of this ‘process of elimination’ has seen investors crowd into technology, healthcare, iron ore and supermarket stocks. As investors soon realised that consumer spending would be confined to buying ‘goods’, given their inability to spend on ‘experiences’ (such as eating out, travel or entertainment), discretionary retailers became another ‘COVID-19 beneficiary’ sector. This has created a bifurcated market, with ‘COVID-19 losers’, such as travel, energy, casinos, shopping centres, financials and infrastructure stocks generally trading 20-50% lower than their February highs. Conversely, many ‘COVID-19 winners’ are now trading at or near record highs, often due to a large P/E re-rating rather than a significant change in their earnings outlook.

Valuations for growth and momentum stocks are now the most stretched we have ever seen. Australian high P/E stocks are trading at 45-50x (versus a long term average P/E of 24x and a P/E of 30-35x in January).



Portfolio Positioning

We remain very positive on the outlook for equities given the wave of central bank stimulus globally and our constructive view on the outlook for a COVID-19 vaccine. We have maintained an average net long of 100-110% since mid-to-late March (versus an average of ~60% since inception of the Long Short Strategy in 2014).

Adding to our excitement is the extreme dispersion in stock valuations. This level of dispersion is likely to add considerably to returns over the next 1-2 years and we believe our ability to position long and short will enable the Fund to take maximum advantage of the opportunity. While we build our portfolio 'bottom-up' from our stock research (selecting stocks that represent the best combination of value and quality), when we step back and look at the major themes and opportunity sets we see at present, they broadly fall into four key themes.

Long Short Fund – Key Themes:

- 1) **Monopoly real assets** – companies such as Chorus, Atlas Arteria, Aurizon, Hotel Property Investments.

These companies look incredibly attractive at present. In general, these companies own monopoly or privileged assets that cannot easily be replaced or substituted. They are expected to generate dividend yields (or free cash flow yield) of at least 6-7% p.a. in coming years with continued growth in dividends beyond that. Some also offer the potential for additional capital management given they currently have under-gearred balance sheets. In a world where long-term bond yields continue trading at 0-1%, we believe these stocks represent an extremely attractive alternative for investors seeking safe yield.

- 2) **COVID-19-hit stocks** – companies such as Star Entertainment, Safran, Scentre Group, Downer.

These companies have had a major hit to their earnings or business models due to COVID-19 and fall into the 'COVID-19 losers' category outlined earlier. We expect many of these stocks will recover most of their losses over the next year as COVID-19 vaccine and treatment progress becomes tangible. In our forecasts, we allow for weaker earnings (and in some cases a potential capital raising) and we still see very significant upside on a 1-2 year view.

- 3) **Resource-related stocks at a cyclical low point** – companies such as Teck Resources, Warrior Met Coal, Oil Search.

We are contrarian investors and like to buy high quality cyclical stocks at a low point in their cycle (and equally, we look to short stocks at a cyclical peak). Commodities such as oil, coking coal and to a lesser extent copper have all reached an extreme cyclical low over the past few quarters and share prices are now reflecting an unsustainable situation, where a large proportion of the world's production is simply not viable at current pricing.

- 4) **Conglomerates with high quality assets and a valuation catalyst** – companies such as CK Hutchison, News Corporation, Nine Entertainment and Iluka.

When investing in conglomerates we look for three main factors before investing, namely: a selection of high quality, market leading assets, a material discount to the sum of the parts valuation of these assets and most importantly an upcoming catalyst that will result in the market better reflecting this underlying value. We believe each of the above stocks has major positive catalysts on a 12 month view:

- **CK Hutchison** – Spin out and sell-down of their strategic portfolio of 28,500 telco towers in Europe that are the enabler of 5G (comparable assets trade at close to 20x EBITDA);
- **News Corporation** – Potential restructure/demerger of the digital real estate assets (such as REA & Move) or the Wall Street Journal;
- **Nine Entertainment** – Consensus earnings forecasts are excessively bearish on the outlook for media spending in Australia and we expect large EPS upgrades to come through over the next 6 months; and
- **Iluka** – Demerger of Mining Area C Royalty expected in late October.



Key stock contributors

Chorus (CNU Long +14%) shares rallied after reporting FY20 results that demonstrated good cost control and continued take up of fibre services. Valuations for infrastructure assets continue to increase in a lower bond yield environment with Chorus benefiting from this trend, as well as from a greater appreciation for high-quality fibre assets amidst the COVID-19 pandemic. The fibre build has been consuming the majority of Chorus' cashflow for many years and has prevented the company from paying out its true underlying earnings in dividends. With the peak capex period now past, we are hopeful shareholders should finally see the returns on this 10-year investment program.

Bed Bath & Beyond (BBBY U.S. Long +41%) has been a very strong performer for the Fund over the quarter. BBBY is a major U.S. retailer that has been struggling from many years of mismanagement, poor capital allocation and a lacklustre customer experience. Mark Tritton (a fellow Australian) was appointed CEO in November 2019 and has spent the past year replacing senior management with a proven team of high calibre executives that are now set to overhaul all aspects of the business. Tritton is an exceptional retail executive who had been instrumental in the turnaround of Target U.S. (he was the Head of Merchandising). At the time we bought in to BBBY earlier this year, the company was widely expected to go bankrupt. Short interest was an astounding 60%, almost every sell-side analyst rated the stock a "sell" or "neutral" and the shares had already fallen from \$75 in 2015 to less than \$5 by March this year. We bought in at around \$9.20 in July, believing that the shares had enormous upside even if the new management team only delivered on their initial cost out targets and non-core asset sales. BBBY has its strategy day on October 28, where management is expected to lay out their plans for improving sales trends, enhancing the digital offering, reducing costs and outlining their capital management plans. Despite the rally in the shares to around \$15 by quarter end, we continue to see very large upside in the stock given numerous areas of low hanging fruit (such as better product sourcing, higher quality private label products, more efficient supply chain, closing loss-making stores, cutting head office costs, selling non-core assets, etc). We also expect management will flag large scale buybacks that will demonstrate both balance sheet strength and management's optimism in the future of the business.

Teck Resources (TECK U.S. Long +34%) shares rallied strongly over the quarter driven by early signs of recovery in the coking coal market. Increasing seaborne demand from India and China (following a recovery in domestic steel production) drove an 18% increase in coking coal prices in September. Teck is one of the world's highest quality mining companies with very low-cost operations in coking coal, copper and zinc. All of Teck's main assets are situated in low risk jurisdictions, such as Canada, the U.S. and Chile. Teck is currently building one of the world's largest copper mines (QB2) at a time when the world is gradually becoming short copper, due to ongoing grade declines at the world's largest mines. Copper demand continues to enjoy secular growth due to rising living standards across Asia. We established a position in the company with the view that Teck was well placed to benefit from a recovery in copper and coking coal prices over the medium term, as spot prices were close to marginal cash cost for many mines and incremental supply has proven difficult to bring on in a timely manner. We have started to see early signs of this recovery and continue to believe Teck is exceptionally well placed to benefit from this going forward. Despite the strong performance over the quarter, we continue to believe Teck is materially undervalued. Even at today's depressed commodity price assumptions, Teck trades on a P/E of only 9.2x FY21 (consensus earnings) and 4.7x EV/EBITDA, despite a large cost out program still to come over the next few years.

News Corp (NWS Long +12%) shares rallied after reporting a strong FY20 result with all key divisions materially ahead of market expectations. News Corp provided additional disclosure around the Dow Jones assets (including the Wall Street Journal) bringing further visibility to the significant value of these assets as compared to listed peers such as the New York Times. If we apply the New York Times' earnings multiple to the Dow Jones assets it would imply a stand-alone valuation of ~US\$7b. We continue to believe News Corp is materially undervalued with the REA interest combined with their net cash position exceeding their current market cap of ~US\$8.4b. This implies the remaining media, publishing and real estate assets, including the above-mentioned Dow Jones assets, currently valued at roughly zero. News Corp management are taking progressive steps to better highlight the underlying value of the assets and simplify the corporate structure which we believe will continue to unlock value going forward.



Imdex Limited (IMD Long +21%) shares rose strongly after reporting solid FY20 results and a strong start to FY21. Imdex is by far the global leader in exploration drilling technology for the mining sector. 80% of the business is exposed to gold, copper and iron ore with all three commodities having favourable medium term exploration and production outlooks. In particular, we have seen a significant uptick in capital raisings from junior gold miners for exploration purposes and expect this to flow through to Imdex over the coming year. Imdex has incurred major R&D spend over the past five years and is in the early stages of launching the industry's best suite of products. We have spoken with many mining companies, drilling companies and competitors to assess Imdex's products and prospects and believe the market underestimates the lead Imdex has over its peers. We believe Imdex is one of the most exciting small cap stocks in Australia and is set to deliver earnings growth of more than 20% p.a. (well above consensus estimates) for many years to come.

Karoon Energy (KAR Long +27%) is an oil and gas company that has been focused on acquiring producing assets in Brazil. We previously wrote about Karoon in March when the shares were trading at around 40¢/share, noting that the Fund had significantly increased its position as we believed the shares were dramatically oversold, given the company had cash backing of approximately 75¢/share. Karoon agreed to buy an oil asset in Brazil, however our view was the deal would not complete on the current terms given the dramatic fall in the oil price. In July, Karoon shares rallied after the company announced a repriced deal for the Brazilian oil asset, with ~40% of the purchase price now linked to contingent payments dependent on oil price thresholds of US\$50-US\$70/bbl over 2022-2026. Karoon also structured the upfront purchase consideration on a staggered basis, preserving ~US\$130m in net cash post transaction completion, to enable the funding of capex at the field which will significantly boost production. We believe Karoon has negotiated a very attractive transaction and is well placed to transition from a "cash box" to a major Australian oil producer with upside from strong expected cashflow and opportunities for bolt-on deals.

Peet Limited (PPC Long +27%) shares rallied strongly over the quarter with a strategic real estate fund manager (360 Capital) becoming a substantial shareholder. Peet is a developer of master planned residential communities with a primary focus on the first home buyer. We provided a detailed note on Peet in our December 2019 quarterly report which called for a change in strategy for the company to focus on the funds management business and transition to a capital-light development model. We welcome further strategic interest in Peet and continue to believe the company is significantly undervalued. We continue to engage with the Board and see a path to a much higher share price assuming a well-executed change in strategy as we outlined in our December quarterly report.

Worley (WOR Long +10%) shares rose after reporting resilient FY20 results that highlighted the more diversified nature of the business post the ECR acquisition. Worley proactively managed costs and staff utilisation levels to deliver second half earnings in line with the first half, along with a large improvement in cash generation, despite the impacts of the oil downturn and COVID-19 disruptions across the business. Worley initiated a \$275m operational cost out program (~26% of FY20 EBITDA), with \$165m of this program already delivered on a run-rate basis. While the near term outlook may be more subdued, the significant cost action taken by Worley provides a material buffer for any potential revenue weakness. Worley management have done an outstanding job of navigating the downturn, streamlining operations and positioning the business to capitalise on an improvement in the capex cycle. We continue to believe Worley is materially undervalued with the market underappreciating the flexibility of its engineering consulting business model and the diversified and resilient nature of its operations.



Key stock detractors

Unibail Rodamco Westfield (URW Long -40%) shares declined sharply after the announcement of a €9b capital reset plan to strengthen the balance sheet including €4b in asset disposals and a €3.5b capital raise with terms to be announced post EGM approval in the December quarter. URW operates the highest quality portfolio of retail shopping malls in Europe and the U.S. The company acquired Westfield for \$32b in December 2017 in a cash and scrip offer which increased their proforma gearing from ~33% to close to ~40% of LTV. We established a position in the company in May after the shares had already fallen more than 65% since January. Our valuation views incorporated a potential capital raise to bolster the balance sheet until restrictions eased, however, we believe the company's reset plan was poorly structured and timed in light of market conditions. URW does not have any covenant breaches likely in the near term, with positive data points in both foot traffic and rent collection rates likely as we move into 2021. Furthermore, the announcement of a future capital raise without confirmation of the exact date or key terms has created an overhang on the stock for an extended period. We believe URW shares are materially undervalued, trading at an 80% discount to latest reported Net Tangible Asset Value and at a substantial discount to the likely asset value post equity raise, further devaluations and asset sales. Further clarity on the equity raise terms, execution of the asset sale program and a continued recovery in foot traffic, should all act as share price catalysts over the next 6-12 months.

Oil Search (OSH Long -17%) shares fell due to a ~6% decline in crude oil prices and the broader transition away from energy stocks over the quarter. Oil Search is one of the highest quality energy stocks listed in Australia, given its low cost of production, long life assets, attractive growth options and partnership with a high quality operator (Exxon Mobil). Oil Search has a large stake in two very substantial growth projects in PNG and Alaska and, as oil prices recover, we believe the market will likely reincorporate meaningful value for these projects in group valuations. Furthermore, we believe the more difficult economic backdrop in PNG is likely to incentivise the PNG Government to resolve their differences with the joint venture and enable this project to proceed (subject to market conditions). While we expect continued share price volatility in the near term, we believe that Oil Search is extremely well placed over the medium to long term to benefit from a recovery in oil prices.

CK Hutchison (0001 HK Long -6%) shares declined due to weakness in some of its port and retail operations in the first half of the year and a broader decline in the Hong Kong stock market following an increase in U.S./China tensions and concerns around Hong Kong protests. CK Hutchison is a diversified conglomerate with European and Australian infrastructure and telecom assets comprising the vast majority of its value. Hong Kong assets represent only 1% of group earnings. CK Hutchison is currently trading on a P/E of less than 6x FY21 (consensus earnings), with a 6% dividend yield and a free cash flow yield of over 20%. We see a major positive catalyst for the shares by the end of the year as the firm is set to potentially monetise some of its multi-billion dollar telco towers portfolio, which can be redeployed for highly accretive deals/buybacks. We believe CK Hutchison will generate a stronger second half performance as core infrastructure and telecom assets continue to prove resilient and the port and retail pharmacy operations gradually return to growth.



Encouraging outlook for COVID-19 treatments and vaccines

As we have written previously, COVID-19 research has been a huge focus for us throughout 2020. We have conducted an enormous amount of detailed research including more than 100 meetings/calls with leading clinicians, along with the leading major vaccine and therapeutics players. We have been more optimistic than consensus around the likelihood and timing of a safe and effective vaccine, as well as the interim benefits that treatments (such as monoclonal antibody drugs from companies such as Regeneron & Eli Lilly) can be a helpful bridge until the vaccine is commercialised and rolled out globally.

Over the quarter, we have seen rapid and substantial progress:

(1) Vaccine trial data to date has been overwhelmingly positive. This provides us with continued confidence that at least one phase 3 trial will succeed in delivering a safe and effective vaccine

There are currently nine companies globally in Phase 3 trials – five in the western world (Pfizer, Moderna, J&J, AstraZeneca and Novovax), three in China (Sinovac, Sinopharm and Cansino) and one in Russia (Gamaleya Research Institute). We expect positive data to be released from at least one of the western world Phase 3 candidates over the next few months (Pfizer is expected to read out interim data in the next month and Moderna around December). We continue to find many investors who do not believe that a vaccine will emerge or that it will be rolled out within the next year. Our confidence is based on the fact that:

- there are more than 160 vaccines that have commenced trials globally;
- nine trials are likely to complete their final (phase 3) trial in the next 3 months, using a range of different approaches (eg. mRNA, adenovirus, inactivated virus) providing numerous ‘shots on goal’; and
- we have seen an unprecedented and co-ordinated effort from big pharma, biotechs, regulators, governments and trial candidates, which we believe will achieve commercialisation of an effective vaccine only 12 months after first identifying the virus.

(2) Initial trial data indicates antibody-based treatments could reduce hospitalisation rates by more than 70%

Eli Lilly and Regeneron have both reported clinical trials with antibody-based treatments which showed a significant reduction in the symptoms and duration of disease in mild to moderate cases of COVID-19. While these treatments still need to complete their larger phase 3 trials, we are optimistic on their potential to significantly improve COVID-19 outcomes. We note that President Trump was recently administered Regeneron’s antibodies (along with steroids and other medications) after he tested positive for the virus and was able to recover quickly and be discharged from hospital after 3 days.

(3) The roll-out of rapid COVID-19 antigen testing will facilitate mass screening and contact tracing

Since the start of the pandemic, public health bodies globally have rolled out polymerase chain reaction (PCR) based tests for COVID-19. These tests are very accurate but require specialised personnel and need to be centrally processed at a laboratory, which increases costs and report times, sometimes up to a few days. High prevalence countries, like the U.S., simply could not meet the volume of PCR testing and rapid turnaround time needed to stay on top of the outbreak. In late August, the FDA approved Abbott’s Rapid Antigen Test, which is cheaper, can be processed at the point of delivery and provides a result within 5 minutes. These tests have begun to be rolled out across the U.S. and we expect that it will significantly improve the detection and containment of COVID-19, as they are ideal for symptomatic detection, mass screening and contact tracing.

We believe the outlook for COVID-19 will improve significantly over the next year as improvements in testing and antibody based treatments reduce the severity of the virus spread. Our discussions with these vaccine companies (and their outsourced manufacturers and suppliers) suggests that we will have widespread vaccine availability by Q2 in the U.S. and Q3 for most of the developed world. We believe the market continues to ignore the fact that Pfizer and Moderna (via Lonza) have already commenced large scale manufacturing ahead of their potential approvals, which will enable a very fast vaccine roll out for high risk populations (such as front line healthcare workers, aged care residents and workers, etc). We expect Pfizer will have more than 100m doses available for supply by December, with clear plans to deliver at least 1.3b doses in 2021. While there is still uncertainty as to the exact percentage efficacy that will be achieved (and the durability of any vaccine), we believe it will be enough to enable people to resume near-normal activities, such as visiting a shopping centre, going to a café, working from the office, taking a flight, etc.

Share prices of many COVID-19 impacted stocks are still suggesting a large and permanent negative impact on earnings and cashflows, because of the fear and uncertainty that the normal (pre-COVID-19) way of living may never return. We believe this set-up has created one of the greatest investment opportunities of our careers, with stocks in sectors such as Travel, Energy, Gaming, Industrials, Property and Infrastructure remaining very oversold and implying a much more bearish outlook for COVID-19 than we believe is likely over the coming 1-2 years.



Worley (WOR:ASX) – Long Position

Worley is a leading global provider of professional project and asset services in the energy, chemicals and resources sectors. Worley has a worldwide team of ~50,000 consultants, engineers, construction workers and data scientists that are focused on solving complex problems for a range of multi-national clients.

Worley shares are trading ~30% below pre-COVID-19 levels due to the significant fall in the oil price earlier this year and concerns over COVID-19 restrictions leading to a subdued recovery in oil demand. We believe Worley is an attractive investment as the market incorrectly perceives the company as a direct exposure to the oil and gas industry, while greatly underappreciating the flexibility of its engineering consultancy led business model and the diversified nature of its operations. Worley is trading on only 13x consensus FY21 earnings which is a substantial discount to its 3-year average multiple of ~18x and is on a depressed earnings base impacted by COVID-19.

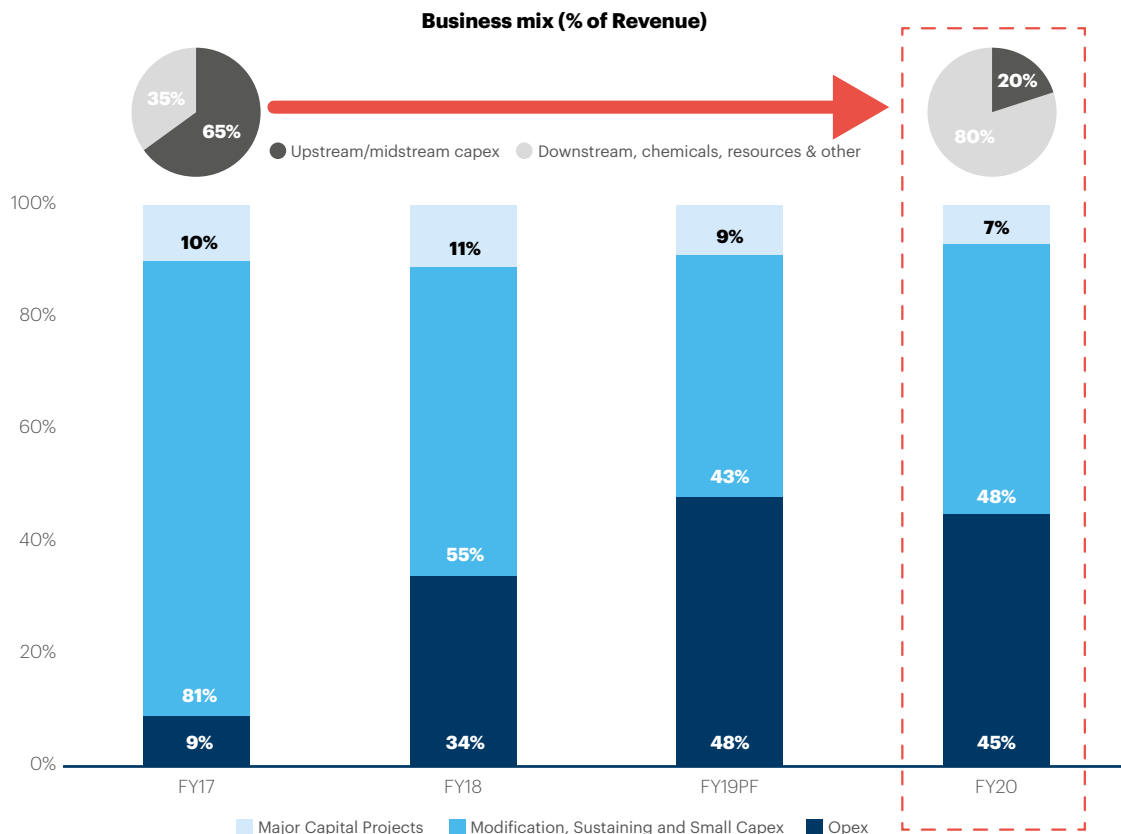
We have been adding to our position at attractive levels over the past few months and believe Worley is incredibly well positioned to deliver margins ahead of consensus expectations and to take advantage of an improvement in the capex cycle as global growth recovers.

There are five key aspects we believe are underappreciated by the market:

1) **Worley is a much more diversified business post the ECR acquisition and much better placed to weather the downturn in upstream oil and gas capex relative to prior cycles**

Worley announced the acquisition of Jacob’s Energy, Chemicals and Resources (“ECR”) division on 22 October 2018, nearly doubling the proforma revenue of the company. The ECR acquisition resulted in a significant shift in Worley’s revenue exposure towards more opex related activities and away from predominantly upstream and midstream capex exposure. As illustrated in Chart 1, upstream/midstream capex comprised ~65% of Worley’s revenue in FY17, with this dropping to ~20% in FY20. Furthermore, opex related expenditure, which is typically much more stable, has increased from <10% of revenue in FY17 to ~45% of revenue in FY20. The fundamental shift in business mix has resulted in a much more resilient and diversified business model going forward.

Chart 1: Worley revenue exposure



Source: L1 Capital Analysis, Worley FY20 investor presentation.



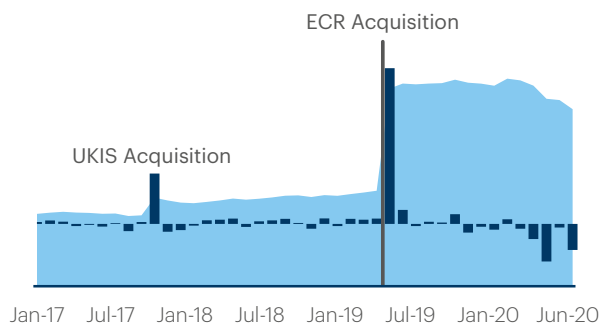
2) Worley has a flexible, reimbursable led business model that can be scaled up or down to match market demand, unlike lump-sum focused peers

We believe Worley is much more comparable to a global engineering consultancy business than a lump-sum contractor. Worley derives ~81% of its revenue on a reimbursable basis and tightly manages headcount to maintain utilisation above target levels as illustrated in Chart 2 below. Labour costs are Worley’s largest expense and comprise ~70% of FY20 direct overheads. Worley is therefore able to materially scale its cost base up or down in response to the demand environment. For the second half of June FY20, Worley delivered a 70bps improvement in EBITDA margins on a year on year basis through the delivery of synergies from the ECR acquisition and its proactive management of utilisation levels. Worley’s key European and U.S. peers including Wood Group, Tecnicas Reunidas, Petrofac, Saipem, Aker Solutions, Hunting, Subsea 7, Technip FMC and Schlumberger all had varying levels of margin decline over the same period.

Chart 2: Global headcount and staff utilisation levels

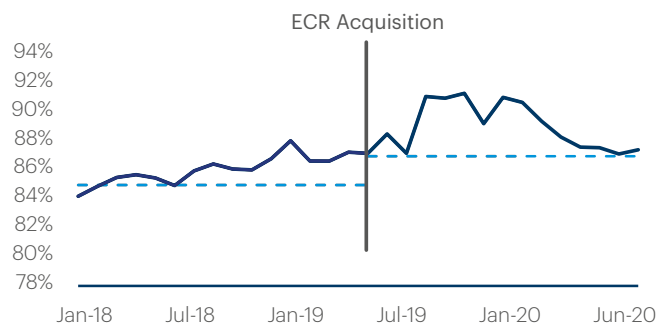
Worley global headcount (30 June 2020)

■ Change to prior month (staff only since Apr 2019)
■ Headcount



Staff utilisation (30 June 2020)

— Monthly rate
- - - Target



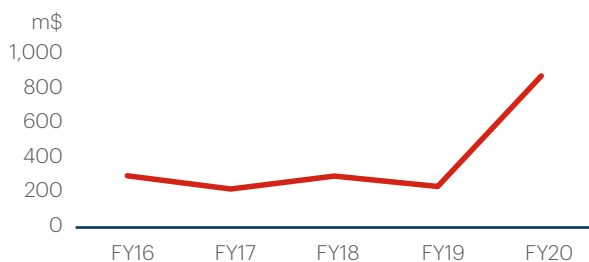
Source: Worley FY20 investor presentation.

3) Worley has continued to demonstrate improving cash generation and lower gearing despite macro headwinds

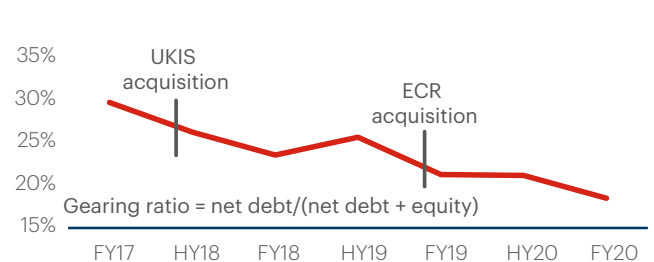
A common issue with contractors is the inability to deliver consistent free cash flow due to project related issues and/or working capital delays. A number of Worley’s peers such as Fluor and McDermott have had significant issues with fixed price contracts that have either led to bankruptcy filings (in the case of McDermott) or significant share price declines and SEC investigations (in the case of Fluor). Worley does not take on material lump-sum contracts and therefore has a very different risk profile to these peers and a much more consistent cash generation profile. Furthermore, as illustrated in Chart 3 below, Worley management have substantially improved working capital and cash conversion over the period to drive a significant improvement in operating cash generation in FY20 despite the impacts of the oil downturn and COVID-19.

Chart 3: Operating cash flow generation and gearing

Underlying operating cash flow



Gearing ratio* (%)



* Net debt, gearing ratio and leverage ratio are calculated on the debt covenant definition. HY19 excludes the impact of proceeds from capital raising. FY20 excludes the impact of AASB 16 Leases.

Source: Worley FY20 investor presentation.



4) Worley has initiated a significant cost out program, with a history of strong delivery on prior cost-out initiatives

Worley management have implemented a ~\$275m cost out program (~26% of FY20 EBITDA) to streamline and simplify the business in response to the oil downturn. Worley has already delivered ~\$165m of the \$275m program on a run-rate basis through their actions in the FY20 period. This will be further supplemented by an upgrade to synergies from the ECR acquisition from ~\$175m to ~\$190m.

The management team have a strong history of delivery on prior cost out programs. From 2013 to 2016, Worley faced a very challenging macro backdrop as international oil majors and national oil companies cut oil and gas capex spending. In response, Worley reduced its overheads by ~33% or ~\$500m primarily through optimising its footprint, pooling resources and improving staff utilisation.

While the near term revenue outlook may be more subdued, we believe the significant cost out program and streamlining of operations positions the company well to deliver margins ahead of consensus expectations in FY21 and to take advantage of an improvement in the capex cycle as global growth recovers post COVID-19.

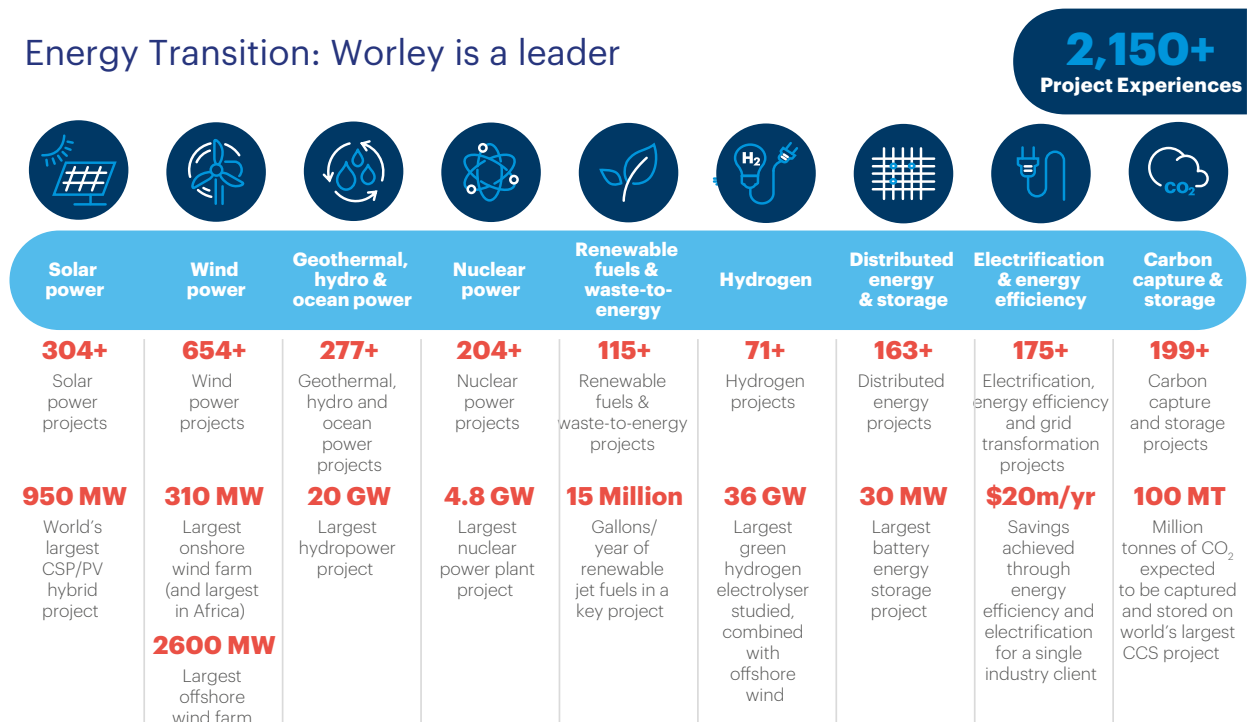
5) Worley is well positioned to benefit from increased spend on energy transition technologies

Worley is often viewed as a direct exposure to oil and gas expenditure rather than as an engineering and project delivery specialist across the energy, resources and chemicals sectors. We believe the transition to cleaner forms of energy and the global focus on reducing emissions is an opportunity for Worley rather than a threat. Worley’s deep bench of engineers can pivot towards solving energy transition related opportunities such as the installation of offshore wind turbines and substations or development of carbon capture technologies to reduce emissions for global oil and gas companies. Chart 4 illustrates Worley’s leadership position in executing projects across the energy transition landscape.

We believe investment in hydrocarbons will continue as oil and gas remains a fundamental part of the energy mix going forward and Worley is well placed to benefit here as global oil demand recovers. However, we also believe the shift to cleaner forms of energy will be tailwind to further highlight Worley’s energy transition credentials and drive additional growth potential.

In summary, we believe Worley is a compelling long term investment for the Fund and exhibits all the key attributes we look for in a stock – a large discount to valuation, a strong position in their industry and a proven management team with a track record of delivering on their objectives. We believe that over time the market will re-rate the stock as investors recognise the leadership position they have established, along with the resilience and quality of their business.

Chart 4: Worley’s energy transition experience



Source: Worley FY20 Investor Day presentation.



L1 CAPITAL

Long Short Fund

Quarterly Report | September 2020

L1 Capital Overview

L1 Capital is a global investment manager with offices in Melbourne, Sydney, New York and London. The business was established in 2007 and is 100% owned by its senior staff, led by founders Raphael Lamm & Mark Landau. The team is committed to offering clients best of breed investment products. L1 Capital manages money for a range of clients including large superannuation, endowment funds, private banks, insurance companies, pension funds, financial planning groups, family offices, high net worth individuals and retail investors.

L1 Capital uses a fundamental, bottom-up research process to identify investments with the potential to provide attractive risk-adjusted returns. The L1 Capital investment approach is largely style-neutral with modest value and contrarian characteristics. The firm launched its flagship L1 Capital Australian Equities Fund in August 2007. Since inception, the L1 Capital Australian Equities Fund has been one of the best performing large cap, long only funds in Australia, outperforming the S&P/ASX200 Accumulation Index by 2.8% p.a. (after fees).

Fund Information

Name	L1 Capital Long Short Fund
Class of Units	Daily
Structure	Unit Trust
Domicile/Currency	Australia/AUD
Inception	1 September 2014
Management Fee	1.54%
Performance Fee	20.50%
High Watermark	Yes
APIR/ISIN	ETLO490AU/AU60ETLO4909
Minimum Investment	A\$25,000
Subscription Frequency	Daily
Redemption Frequency	Daily

Service Providers

Responsible Entity	Equity Trustees Limited
Prime Broker	Morgan Stanley, Credit Suisse
Fund Administrator	Mainstream Fund Services
Fund Auditor	EY
Fund Custodian	HSBC
Legal Advisor	Hall & Wilcox

There have been no changes to key service providers since the last quarterly report.



Level 28, 101 Collins Street
Melbourne VIC 3000 Australia

Phone +61 3 9286 7000
Fax +61 3 9286 7099
Email info@L1.com.au

www.L1.com.au

Note: All performance numbers are quoted after fees. All performance in this update prior to 3 October 2016 (being the date that the first Daily class units were issued) relate to the monthly class units which are subject to a different fee structure. Sharpe ratio, sortino ratio, maximum monthly drawdown, annualised standard deviation and annualised downside deviation relate to the monthly class units. 1. The value of the Fund's assets less the liabilities of the Fund net of fees, costs and taxes. 2. The unit price is calculated by decreasing the NAV price by the sell spread (currently 0.25%). The NAV price is the NAV divided by the units on issue. Past performance is not predictive of future returns.

Information contained in this publication

Equity Trustees Limited ("Equity Trustees") (ABN 46 004 031 298), AFSL 240975, is the Responsible Entity for the L1 Capital Long Short Fund. Equity Trustees is a subsidiary of EQT Holdings Limited (ABN 22 607 797 615), a publicly listed company on the Australian Securities Exchange (ASX: EQT).

This publication has been prepared by L1 Capital Pty Ltd (ACN 125 378 145, AFSL 314 302), to provide you with general information only. In preparing it, we did not take into account the investment objectives, financial situation or particular needs of any particular person. It is not intended to take the place of professional advice and you should not take action on specific issues in reliance on this information. Neither L1 Capital Pty Ltd, Equity Trustees nor any of its related parties, their employees or directors, provide any warranty of accuracy or reliability in relation to such information or accepts any liability to any person who relies on it. Past performance should not be taken as an indicator of future performance. You should obtain a copy of the Product Disclosure Statement before making a decision about whether to invest in this product.

Disclaimer and limitation of liability

To the maximum extent permitted by law, L1 Capital will not be liable in any way for any loss or damage suffered by you through use or reliance on this information. L1 Capital's liability for negligence, breach of contract or contravention of any law, which cannot be lawfully excluded, is limited, at L1 Capital's option and to the maximum extent permitted by law, to resupplying this information or any part of it to you, or to paying for the resupply of this information or any part of it to you.

Copyright

Copyright in this publication is owned by L1 Capital. You may use this information in this publication for your own personal use, but you must not (without L1 Capital's consent) alter, reproduce or distribute any part of this publication, transmit it to any other person or incorporate the information into any other document.